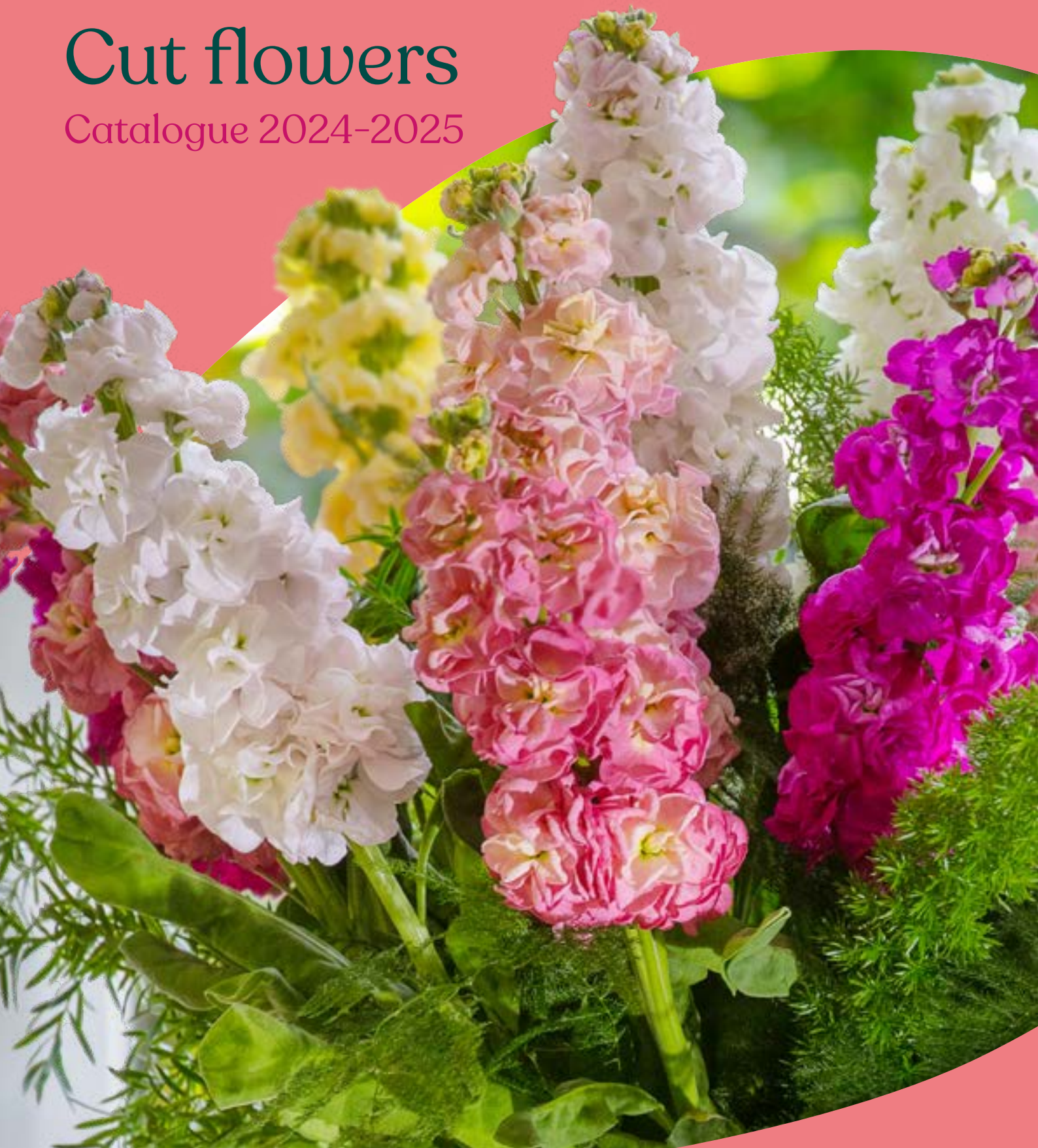


evanthia

Cut flowers

Catalogue 2024-2025



evanthia

Cut flowers

Catalogue 2024-2025

At Evanthia we do everything we can to get growers off to a good start with a successful crop.



Cover: Matthiola incana StoX®

“Together we are laying the foundation, from seed to success.”

What will be the stunners of your cut flower range next season? Are you missing specific colours? Looking for technical upgrades? Are you interested in new series or even new crops for your business? Our brand-new Cut flower Catalogue is filled with exciting newcomers and long-time cut flower favourites, as well as a broad range of stunning seasonal flowers and foliage, to give you plenty of inspiration and options. At Evanthia you'll find the best varieties from our own breeding along with a selection of top series from breeders all over the world. Whether you're looking for a solid year-round programme or strong seasonal sellers, Evanthia is your full-service supplier. And it doesn't stop there...

Evanthia is committed to supporting growers with strong genetics, technical know-how, tools, marketing and personal service. As recent world developments have underlined even more: innovation is key and working together is the solution. By reinventing ourselves, our businesses and our products we find new ways to help you succeed. With us, you know who you are doing business with. We pride ourselves on our personal touch and are at your side every step of the way. We believe in building solid partnerships. Together with growers we want to connect with retailers and florists worldwide, in order to learn and develop together and to create excellent market positions for all parties involved. We offer everything you need to get off to a good start and to help you grow

the crops that are perfect for your unique business. Together we are laying the foundation, from seed to success.



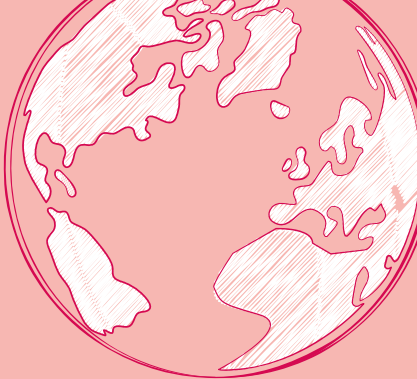
Let's team up! We invite you to stop by at our company in the Westland in the Netherlands, meet us at international trade events, come to our product trials, visit our website, register for our newsletters and follow our social media. You can easily get in contact with our team in various accessible ways. We are always ready to connect with you, online and offline.

This catalogue focusses on Evanthia genetics, exclusives, seasonal flowers and foliage. For a more complete product overview, please visit evanthia.nl/en



Peter's personal favourites

As Product Manager at Evanthia, Peter van Noort is the link for Evanthia's genetics between the breeding and technical specialists, the commercial team and the market. Let's take a closer look at a few of Peter's personal favourites in cut flowers.



1 Antirrhinum Toulon White IV

Evanthia offers a solid year-round Snapdragon programme, with rich colourful series that are classified into 4 clear groups. The radiant Toulon White is one of our summer trials favourites and a true group IV variety, developed for cultivation under higher temperatures and high light intensity. Our team is all set and ready to help you plan for the perfect seamless programme tailored to your specific region, climate and type of business



2 Celosia Lavly

Thanks to our active breeding programme, chain partnerships, leading series and many colourful specialties, Evanthia proudly sets the tone in the world of Celosias. Together with the breeders of Stadsland we ensure continuous innovation in cultivation, performance, colours and appearances. Lavly is one of the introductions of our extensive range of Celosia Specialties. With its remarkable, lilac / purple colour and velvet flower combs, this variety easily captivates its spectators.



3 Helianthus Solano® Double

Looking for something crazy, sunny and totally different to surprise your sunflower-loving customers? Solano® Double is the fuzzy, fluffy flower that you need. With its big, pompon-like, bright golden blooms it wins them over every time. This variety has a short cultivation period, which makes it easy to grow alongside standard varieties, whereas other double varieties on the market often take longer. As all flowers of the Helianthus Solano® collection are pollen-free, the flower hearts and petals of Solano® Double remain clean, resulting in a longer shelf life.



4 Matthiola StoX® Champagne

Champagne! The Matthiola StoX® series is definitely worth a toast! As a breeder, it's so exciting to create something that truly makes a difference. StoX® is a breeding breakthrough, offering the solution for various links in the chain. A very robust Matthiola with well-filled flower spikes, excellent vase life and selectable for 100% double flowers. Moreover, StoX® is more heat-resistant, less susceptible to pests and diseases and it has a shorter crop time. StoX® Champagne is 1 of 7 sparkling colours.

5 Tanacetum Cameron

Tanacetum Cameron is the latest single-flowered Tanacetum. Cameron is characterised by high uniformity, a well-filled ring of flower petals and many flowers per branch. The bright white petals form a perfectly shaped ring around the yellow, semi-globular heart. The stems have good branching in the more upper part and nicely contrasting, dark green leaves of excellent quality. Tanacetum Cameron can be grown in the greenhouse in a stable year-round programme. It is the perfect choice for a natural look in field bouquets, as a cheerful bouquet filler or for lush floral arrangements.





Always informed

Keep an eye on our website and social media
evanthia.nl

Follow us – [in](#) [f](#) [X](#) [v](#) [i](#) [p](#) [w](#)

Contents

HIGHLIGHTS			
Antirrhinum majus F1 (Snapdragon)	8	Matthiola incana (Stocks)	30
Brassica oleracea F1 (Flowering Kale)	14	Myosotis alpestris	34
Celosia argentea cristata	16	Tagetes erecta F1 (Marigold)	34
Campanula medium F1	20	Tanacetum parthenium (Matricaria)	35
Dianthus barbatus	20	Trachelium caeruleum	37
Eustoma russellianum F1 (Lisianthus)	22	Seasonal flowers	38
Freesia hybrida	27	Cut foliage	40
Helianthus annuus F1 (Sunflower)	28	CONTACT	42
		ASSORTMENT LIST	44



Antirrhinum majus F1

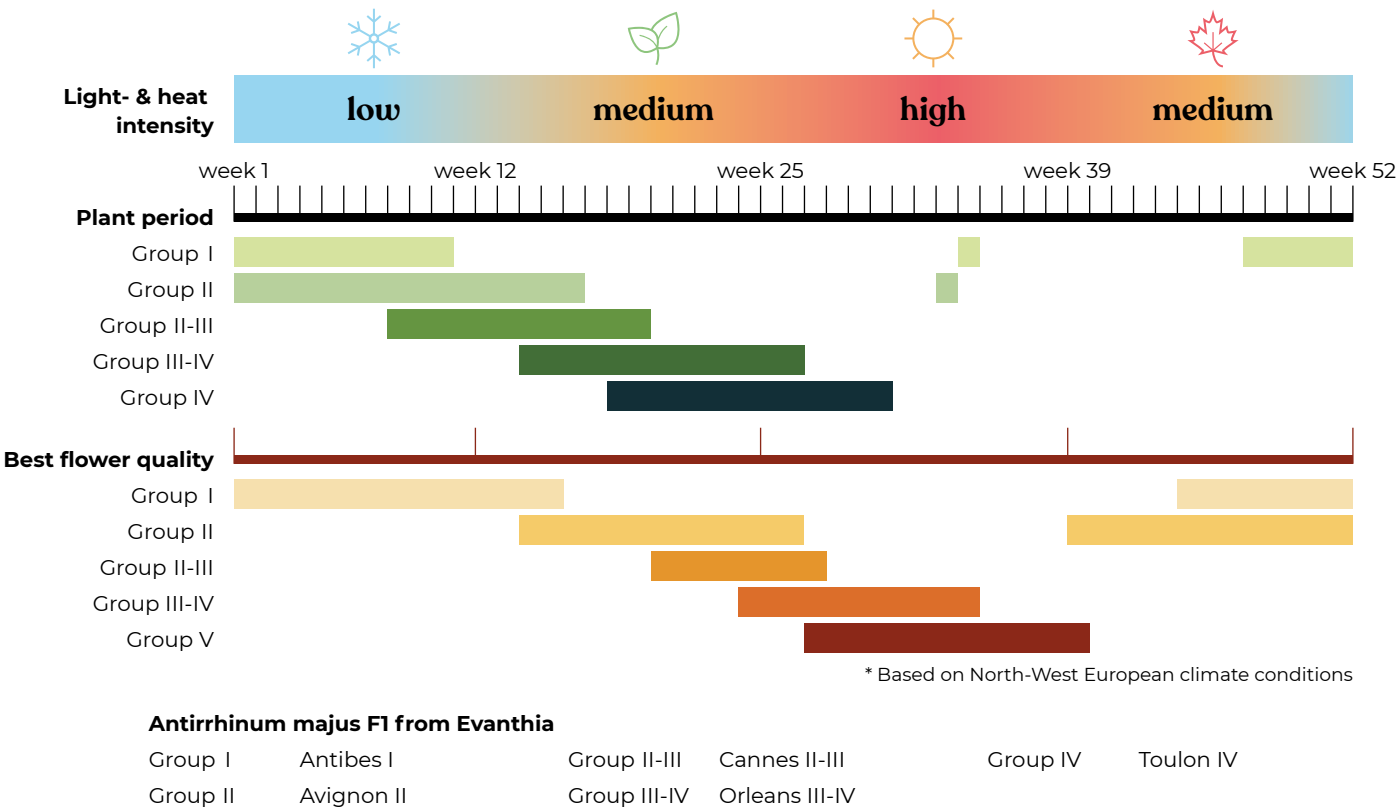
Elegant, stylish and timeless... Snapdragon, Antirrhinum majus F1, is a magnificent flower, suitable for every occasion and every season. The broad spectrum is ideal for endless variation and playing with colours. From greenhouse to vase, it is a much-loved and rewarding product. Evanthia supports its growers worldwide and teams up with traders and retailers, to be successful in year-round Antirrhinum.

Day length, light intensity and temperature influence the growth and flowering of Antirrhinum. Each season and each cultivation location requires customisation. Evanthia's broad product range offers solutions and flexibility for every situation. Our powerful Antirrhinum series can be divided into 4 groups. Each group has the right characteristics to offer top quality and a high production level in a specific period of the year. By combining our series, growers worldwide can produce an excellent, seamless year-round supply.

Please note: We recently updated and rearranged our Antirrhinum collection, to define the groups more clearly to make it even easier to plan and produce Antirrhinum all year round. You will find a few product references marked with an * to indicate previous variety names.



Year-round planning Antirrhinum



Keep an eye on evanthia.nl for the announcement of our extensive Antirrhinum trials.

Antibes I series

The Antirrhinum Antibes I series is ideal for energy-efficient cultivation in cool periods with low light intensity. Antibes can be planted in the greenhouse in late summer and in winter. Experience the abundant flowering and top quality

flower stems from mid autumn to mid spring. Antibes has a wide range of colours and a high level of uniformity in plant habit and flowering time.



Antibes
Deep Orange I*



Antibes
Early White I**



Antibes
Magenta I



Antibes
Pink I



Antibes
Orange I



Antibes
Red I



Antibes
Rose I



Antibes
White I



Antibes
Yellow I

*previously: Animation Deep Orange | **previously: Animation Early White

Avignon II series

The Antirrhinum Avignon II series has been developed to perform under average light intensity and cool to moderate temperatures. This series is considered a typical group II series for the less extreme seasons. Avignon is planted towards the end of summer and throughout the winter period until

early spring. High production and top quality flower stems follow in autumn and spring. This series can be grown both in greenhouses and outdoors.



Avignon
Apricot II*



Avignon
Bicolor Yellow II



Avignon
Cherry Rose II



Avignon
Dark Red II



Avignon
Deep Orange II



Avignon
Deep Rose II**



NEW

Avignon
Ivory II



Avignon
Light Rose II***



Avignon
Magenta II



Avignon
Pink II



Avignon
Rose II



Avignon
Silver II****



IMPROVED

Avignon
White Imp. II

*previously: Costa Apricot II | **previously: Costa Deep Rose II | ***previously: Costa Light Rose II | ****previously: Costa Silver II

Cannes II-III series

Antirrhinum Cannes II-III performs at top level when temperatures and light intensity rise and reach their peak. By planting this series towards the end

of winter into summer, the abundant flowering and top quality flower stems already start mid spring and last until mid summer.



Cannes
Dark Orange II-III



Cannes
Early White II-III



Cannes
Lavender II-III*



Cannes
Lemon II-III



Cannes
Light Bronze II-III



Cannes
Orange II-III



Cannes
Pink II-III



Cannes
Red II-III



Cannes
Purple II-III



Cannes
Red Delight II-III



Cannes
Rose II-III



Cannes
Velvet Red II-III



Cannes
White II-III



Cannes
Yellow II-III

*previously: Costa Summer Lavender III

Orleans III-IV series

Antirrhinum Orleans III-IV has a short cultivation period; about 8 to 12 weeks from planting. This group III-IV series is planted from early spring until early summer, for abundant

flowering and top quality flower stems from the end of spring to the end of summer.



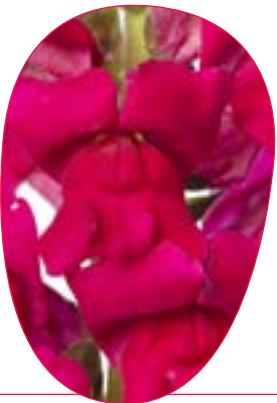
Orleans
Early Lemon III-IV



Orleans
Early Yellow III-IV



Orleans
Light Orange III-IV*



Orleans
Lilac III-IV



Orleans
White Imp. III-IV



Orleans
Pure White III-IV**



Orleans
Red III-IV



Orleans
Rose III-IV



Orleans
Yellow III-IV

*previously: Costa Summer Orange III | **previously: Costa Summer White III

Toulon IV series

Antirrhinum Toulon is your best choice for cultivation under higher temperatures and high light intensity. This group IV series is planted from early spring until early summer, for abundant flowering and top quality flower stems all summer long until early autumn.



Toulon
Purple IV**



Toulon
Lavender IV*



Toulon
Rose IV



Toulon
Velvet IV***



Toulon
White IV

*previously: Costa Summer Lavender IV| **previously: Costa Summer Purple IV | ***previously: Costa Summer Velvet III-IV

Brassica oleracea F1



Empire series

The Brassica Empire series is the latest generation of high quality ornamental cabbages, which has rapidly made a name for itself. Throughout the floriculture supply chain, Brassica Empire is now widely appreciated.

From wholesale to retail and florists, there is an active demand for Empire. And not without reason. Extensive breeding efforts have resulted in a Brassica series with a great appearance, tall sturdy stems of at least 80 cm and a harder leaf structure. In addition, Empire is less sensitive to diseases and has a strong reduction of the typical Brassica odour.

Sow outside in spring, after which you can continue sowing in the greenhouse during summer. With a high level of uniformity and an ideal stem length, Brassica Empire ensures an efficient harvest and a higher average percentage of harvestable product. After harvest, the vase life of the Empire series is also above average. Discover all varieties of the Brassica Empire F1 series and be amazed by the round-leaved, serrated or fringed varieties with trendy earthy colour combinations.



Empire
Agathana

- Medium to late leaf colouring speed
- Bestseller



Empire
Akilina

- Early to medium leaf colouring speed



Empire
Anna

- Early to medium leaf colouring speed
- Bestseller



Empire
Bogdana

- Medium to late colouring speed



Empire
Ksenia

- Medium to late leaf colouring speed



Empire
Luba

- Medium to late leaf colouring speed



Empire
Olga

- Medium to late leaf colouring speed
- Bestseller



Empire
Selena

- Medium leaf colouring speed



Empire
Sofia

- Early to medium leaf colouring speed



Empire
Tekla

- Early to medium leaf colouring speed

Specialties



Brassica
Black Angel

- Medium colouring speed



Brassica
Elegance

- Medium to late colouring speed



Brassica
First Lady

- Medium to late colouring speed



Regional
limitations

Celosia argentea cristata

Act series

The Celosia Act series is the market leader in Europe for Celosia cristata and sets the standard at a very high level. Celosia Act has it all: broad, voluminous flower combs; radiantly bright colours; tall, sturdy, unbranched stems and a long vase life. For the grower, the Act series also offers numerous advantages.

The high level of uniformity in plant development and cultivation speed

between the varieties is exceptionally, ensuring laser-sharp uniformity in production. In addition, Act is less sensitive to diseases such as Botrytis and Fusarium. With the Celosia Act series you get an extra early start and have the opportunity to continue harvesting for a long time. Create a beautiful assortment with the various exotic colours of this top series, or choose for the uniform Celosia Act Mix.

- Plant from early spring (even earlier with additional lighting) until late summer
- Harvest from spring to late autumn



Crazy about CELOSIA

Retro-chic, distinctive, eye-catching ...and a little crazy. That's the Celosia! Crazy about Celosia is an initiative of Evanthia, an ode to these bizarre flowers and a feast of inspiration. Discover the wide range, participate and get connected through crazyaboutcelosia.com

Reprise series

Celosia Reprise is developed for the more exclusive market segment.

This attractive series has compact, finely structured, well-filled combs and striking colours – new this season is the long-awaited Reprise Gold. The series' long stems are firm and have

remarkable dark leaves. Celosia Reprise has a short cultivation period of 8 to 11 weeks and offers the possibility to extend the flowering season. Due to its genetically compact plant structure and significantly smaller leaves, Reprise is an efficient crop in terms of plant density throughout the season. By

planting Reprise at a standard density in the late season, more light enters the crop, allowing you to produce during a longer time window and offer top quality flowers from early spring to late autumn. The flower combs of Reprise are also less sensitive to Botrytis. This is reflected in the extremely long vase life.



Captain series



- Large, ball-shaped flowers (brain-type)
- High quality flowers
- Available in 7 sparkling colours

Martine series



- Flat, fringed medium sized flower combs
- Robust stems and less sensitive to thrips
- Available in 5 original colours

Celosia Jack's



- Bouquet booster with lots of tiny flowers along the stem
- Fringed, medium sized main flower
- Available in Purple, Red and Scarlet

Specialties

Aside from our strong Celosia series, we have a range of Celosia specialties and exclusives with each their own extraordinary features. Whether it's flower colour, shape, size or outstanding growing habits, each of these stand-alone varieties brings something special to your greenhouse.



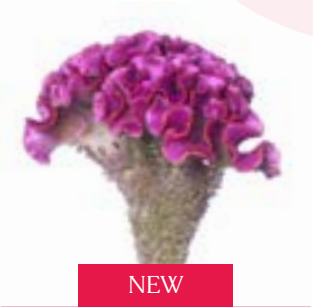
Celosia Haute Couture M

- Medium size, broad flowers with firm stems
- Excellent combination of colour and quality
- Trendy-chic shade: apricot with a hint of pink



Celosia Moonshine Reggae M

- Medium size flowers with a fresh yellow shade



Celosia Lavly M

- Medium size flowers with a unique lilac/purple colour



Celosia Mystic M

- Highly uniform medium size flowers
- Unique deep purple colour



Celosia Pink Delight M

- Medium size spherical flower in velvety pink



Celosia Rose Delight M

- Medium size spherical flower in bright rose



Celosia Smashing M

- Medium size, dense flowers with a fiery red colour



Celosia Smashing Yellow M

- Medium size flowers in warm yellow



Celosia Solid M

- Medium size, fully fringed fan flowers, reaching half way round
- Unique pinkish purple colour
- Highly robust and solid top quality



Celosia Frozen L

- Large size, spherical flowers
- Striking shade , that transforms from fresh minty green to light rose



Celosia Bar Bora (Purple) L

- Large ruffled flowers with extremely sturdy stems
- Less sensitive to thrips



Celosia Bar Bossa (Champagne) L

- Large ruffled flowers in a luxurious colour
- Extremely sturdy stems and less sensitive to thrips



Celosia Clubs Fire L

- Large size flowers
- Strong, bright purple/red comb



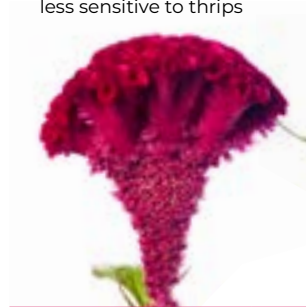
Celosia Coral Diamond L

- Large size flowers with a unique colour



Celosia Cristi Purple L

- Large size flowers with intense colour



Celosia Purple Diamond L

- Large voluminous flowers
- Intense reddish purple colour



Celosia Red Ace L

- Large size flowers in strawberry red



Celosia Sunshine Reggae L

- Large size flowers in sunny yellow orange



Celosia Unlimited Coral L

- Large, ball-shaped flower combs



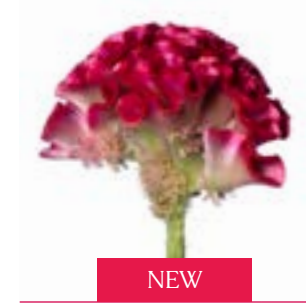
Celosia Unlimited Pink L

- Large, ball-shaped flower combs



Celosia Muse Orange XL

- XL size, coarse flowers with a warm orange colour



Celosia Muse Coral XL

- XL size, coarse flowers in coral red



Celosia Muse Pink XL

- XL size, coarse flowers in soft pink



Celosia Turbo Hot Pink XL

- XL size flowers with intense colour



Celosia Turbo Lilac Rose XL

- XL size flowers with remarkable colour



Celosia Turbo Scarlet XL

- XL size flowers with a deep red colour

Campanula medium F1

Big Ben series

Campanula Big Ben has long stems filled with spectacular flowers. Big Ben is a highly productive Campanula series that can be produced almost year round.

Thanks to its rich flowering, the uniformity of the varieties and a very short cultivation period, Big Ben has quickly gained popularity. The upward-facing, bell-shaped flowers have strong petals that hold up well during transport and handling. The long stems are easy to harvest and perfect to apply in romantic field bouquets and trendy mono-bouquets with a very long vase life.



Big Ben
Deep Blue



Big Ben
Lavender



Big Ben
Pink



Big Ben
White

Dianthus barbatus

Barcelona series

- Annual with a crop time of 10-12 weeks (no cold period needed)
- 100% Sweet William, compact with dark leaves
- Sturdy stems with full screens of flowers and outstanding vase life
- More stems per plant, multiple harvest rounds



NEW
Barcelona
Pink



NEW
Barcelona
Purple



NEW
Barcelona
White



NEW
Barcelona
Red

Barbienne series

- Highly productive biennial series, needs a cold period to bloom
- Long, sturdy stems and large, beautifully formed, dense umbels
- Uniform flowering varieties, also available as a mix



Barbienne
Violet



Barbienne
Appleblossom



Barbienne
Burgundy



Barbienne
Deep Red



Barbienne
Pink



Barbienne
Red White



Barbienne
Rose



Barbienne
Salmon



Barbienne
Scarlet



Barbienne
White

Eustoma russellianum F1 / Lisianthus



Elegant flowers, sturdy stems with sufficient length, masses of flowers and buds in the top and a great durability. With Lisianthus of Evanthia you can count on excellent genetics and promising, continuous development of our product range. With many years of experience we are here to guide you on your variety selection and cultivation journey. Check out our newest Lisianthus collection, LisAdora®! You'll be amazed by its sturdiness and enchanting colours.

Our Lisianthus range of Evanthia genetics covers Lisianthus groups II and III. With assimilation lighting, our Lisianthus series can be grown all year round. Check our website for complementary series to create a year-round programme for any climate or cultivation method.

- Group II: Planting from late winter to mid spring. Harvest from mid spring to early summer.
- Group II-III: Planting from late winter to early summer. Harvest from mid spring to autumn.
- Group III: Planting from mid spring to early summer. Harvest during the summer months into autumn.



LisAdora® collection

ALL NEW! This lovely Lisianthus LisAdora® is a true gift from the heart. This NEW top collection by Evanthia offers beautiful varieties that all ooze tenderness and luxury, yet all are very robust and resilient.

The rich, well-filled double flowers have solid flower petals with an

extraordinary hardiness, making the LisAdora® varieties less susceptible to Botrytis and hold up well in transport and in the vase. In addition, LisAdora® is a collection of special and uniquely coloured varieties that really add something to the established Lisianthus range. The LisAdora® varieties are in Lisianthus group II-III.



LisAdora®
Pink Picotee II-III



LisAdora®
Apricot III



LisAdora®
Deep Blue III



LisAdora®
Light Pink III



LisAdora®
Pure White III



LisAdora®
White II

Cessna series

Lisianthus Cessna is a highly productive top series with medium to large double flowers in a wide colour spectrum.

A major advantage of Cessna is that the varieties in this series grow easily, even in less favourable conditions. The series develops a solid root system, which ensures good resistance. The varieties are uniform among themselves in terms of plant structure and cultivation time. All this makes Cessna a very solid series. Cessna is a group III Lisianthus series.



Cessna
Blue III



Cessna
Blue Picotee III



Cessna
Deep Rose III



Cessna
Green III



Cessna
Pure White III



Cessna
Red III



Cessna
Rose III



Cessna
Rose Picotee III



Cessna
Vogue IV



Cessna
White Imp. III



Cessna
Yellow III

Evanthi series

With the Lisianthus Evanthi series, Evanthia has succeeded in developing a series that is considerably less sensitive to Botrytis.

With firm petals, optimal branching in the top of the stem and ideal positioning of flowers and buds, the robust Evanthi series has proven itself. Evanthi Purple

is a group II-III Lisianthus. Bright coloured varieties with double flowers, sturdy stems and an excellent vase life.



Evanthi
Purple II-III



Evanthi
White Wink III



Evanthi
Yellow II



Lisianthus Minilisi® Mix

Minilisi® series

Great value comes in small packages... Lisianthus Minilisi® is a surprising series with a colourful spectrum of very rich, small-flowered varieties.

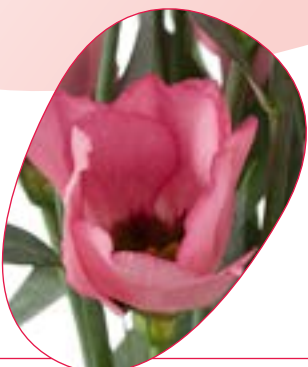
Each branch offers a well-filled cluster of flowers and buds. The smaller flower size is well compensated by the abundance of flowers and buds. There is certainly no lack of colour! Besides the great flowering power, the flowers themselves are very strong and the varieties are highly uniform. Minilisi® is a group II Lisianthus series. Discover all single and double flowered varieties of the Minilisi® series.



Minilisi®
Blue Single II



Minilisi®
Pink Single II



Minilisi®
Rose Single II



Minilisi®
White Single II



Minilisi®
Blue Double II

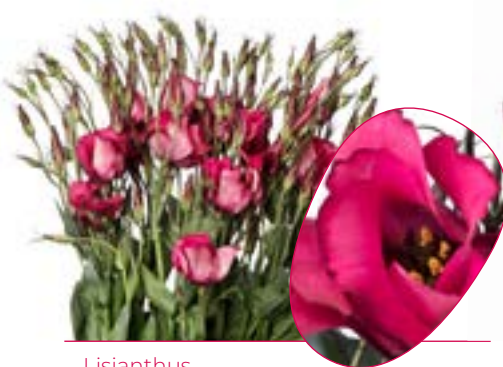


Minilisi®
Rose Double II



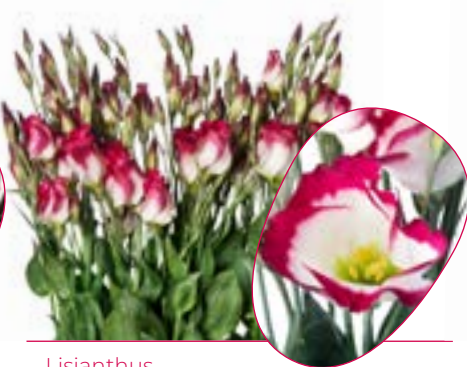
Minilisi®
White Double II

Specialties



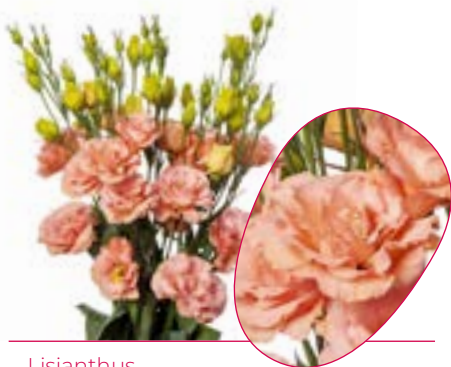
Lisianthus
Adom Deep Red III

Single-flowered with a unique intense pink/red shade and gracious, wavy petals. Group III variety.



Lisianthus
Adom Red Picotee III

Single-flowered with a beautiful colour gradient of white and pink/red flower edges. Group III variety.



Lisianthus
Peach Revelation F1 III

Double-flowered with a beautiful colour gradient of white and pink/red flower edges. Group III variety.

Freesia hybrida

Royal Crown series

The Freesia Royal Crown series is a colourful range of fragrant, large-flowered varieties with vibrant colours.

The flower stems carry single or semi-double, successive flowers that bring colour for a long period of time. The advantage of this Royal Crown series from seed is that you can grow a virus-free Freesia, for both pot plant production and cut

flower production. In the greenhouse you can sow from mid spring for a harvest in autumn. Outside you can sow the Freesia Royal Crown series until mid summer. The following spring you can harvest a beautiful product with sufficient stem length and exceptionally strong stems. The Freesia Royal Crown is available in white, blue, red, rose, yellow and a vibrant mix.



Helianthus annuus F1



Solano® collection

Solano® is a collection of uniform Helianthus annuus F1 varieties with great flowering power and robust, unbranched stems. Thanks to the tall stems (100 to 180 cm) and the small top leaves, Solano® is easy to harvest and process. As the flowers of Helianthus Solano® are pollen-free, the flower hearts and petals remain clean, resulting in a longer vase life.

With its sturdiness, intense colours and well-filled flowers, Solano® attracts the attention of traders and florists. Due to the short cultivation time of 8 to 11 weeks and varieties covering different harvest periods, Solano® quality can be offered from the first rays of sunshine in early spring until the leaves start falling off the trees. This collection assures the market of constant quality and availability.



Solano®
Deep Orange

- Well-filled with 2 to 3 rounds of pointy flower petals
- Less sensitive to day length variations and is therefore more plannable
- Outdoor sowing from early spring to midsummer
- Harvest from early summer to late autumn



Solano®
Gold

- Classic, golden yellow flower with 2 to 3 layers of pointy petals
- Outdoor sowing from early spring to midsummer
- Harvest from early summer to late autumn



Solano®
Orange nr. 12



- Mid-early, uniform variety
- Classic flower shape with 2 rows of overlapping, pointy petals
- Less sensitive to daylength variations, and easy to schedule
- Outdoor sowing from early spring to midsummer
- Harvest from early summer to late autumn



Solano®
Orange nr. 14



- Mid-early variety, well-suited for warmer climates conditions and periods
- 2 to 3 rows of intense orange, oval petals
- Outdoor sowing early spring and early autumn
- Harvest from early summer to late autumn



Solano®
Double



- Pompom-like, fluffy flowers
- Its short cultivation period makes it easy to grow alongside standard varieties, whereas other double varieties on the market often take longer.
- Outdoor sowing from early spring to mid-summer
- Harvest from early summer to late autumn



Solano®
Flame



- Strong, dark fiery bicolor
- Well-filled flowers with 2 to 3 layers of overlapping petals. By Outdoor sowing in spring and summer
- Harvest in summer and autumn

Specialties



NEW

Helianthus
Solcito

- Strong, branching F1 sunflower
- Intense orange, pollen-free flowers with a dark centre
- Flower diameter of up to 10 cm



NEW

Helianthus
Solbrite

- Golden orange flowers with black centre
- Flower diameter of up to 10 cm, contains pollen
- Branching side-shoots

Matthiola incana



An ocean of soft tones, pretty pastels and intense colours, and the sweetest scent only Matthiola can offer. The breeding department of Evanthia is in full swing working on Matthiola.

The highly appreciated Milla series is expanding rapidly with several stunning colours. Aside from that, we are now able to share exciting Matthiola news with you! Selection of double flowered plants at the seedling stage is one of

the main purposes of our stock breeding program. We managed to develop a robust range of Matthiolas with woodier stems that is easy to select for doubleness after a cold treatment, resulting in an excellent series with 100% double flowers. With this new series we truly combine the best of both worlds: the sturdy and long-lasting features of Japanese type stock and the selectability of European type stock. StoX® is the new high standard and offers solutions to anyone who works with Matthiola.



StoX® series

With Matthiola StoX® the breeders of Evanthia managed to design a brand-new Matthiola series that answers to the needs of various links in the chain, offering solutions and giving more opportunities to be successful with the marvelous Matthiola.

After intensive testing, trialling and evaluating with international young plant producers and growers, we can proudly say Matthiola StoX® is a

breeding breakthrough and a new high standard for the future of this crop.

- Sturdy and outstanding vase life of woodier, Japanese type stock
- Selectability of European type stock: easy to select for doubleness after a cold treatment, resulting in an excellent series with 100% double flowers
- More heat resistant series, which gives opportunities to extend your season of supplying Matthiolas
- Less sensitive to pests and diseases
- Shorter cultivation time than other Matthiola series out there
- Very uniform crop with a high harvest rate
- Tall, voluminous and rich flowering spikes
- Vibrant, 7-colour palette, with unique colours like Champagne and Silver
- Active breeding programme, with more colours to be added in the nearby future



StoX®
White



StoX®
Antique Rose



StoX®
Champagne



StoX®
Deep Rose



StoX®
Rose Pink



StoX®
Silver



StoX®
Yellow



Milla series

Milla is a relatively new Matthiola series and has the full attention of our team of breeders.

Plant this series from early winter until late spring. From early spring until midsummer, Milla easily produces sufficient stem length compared to other varieties in the market. Milla has a very uniform crop, strong stems and excellent flower quality.



Milla
Aubergine



Milla
Blue



Milla
Deep Rose



Milla
Lavender



Milla
Light Pink



Milla
Purple



Milla
Rose



Milla
Salmon



Milla
White

Coselja series

Coselja forms a class of its own with darker green, more oval shaped leaves and somewhat larger flowers. The stems are longer, somewhat woodier and more robust, which ensures an excellent vase life.

Coselja is perfect for outdoor cultivation. Plant the Coselja series in winter until late spring for top quality from spring to summer. Available in 6 fresh colours.



Centum series

The Matthiola Centum series delivers top performance and rich flowering from spring to midsummer.

Plant the Centum series from winter to late spring. Centum is loved for its well-filled flower spikes, high stem quality and a range of brilliantly bright colours.



Jordyn series

The Matthiola Jordyn series is developed for an early start.

Plant the Jordyn series early in winter until late spring, for an extra early harvest in spring to well into the summer. Jordyn is known for a powerful plant structure and high quality, firm flower stems. Available in 9 individual colours.



Myosotis alpestris

Blue Memory

Simply unforgettable... Myosotis Blue Memory is a lovely Forget-Me-Not, well-suited for cut flower production. Its pretty, single, bright blue flowers bloom all along the stems and match perfectly with the fresh green foliage.

Blue Memory produces several branches per plant and offers sufficient stem

length to add a romantic touch to a natural field bouquet. This Myosotis needs a cold period to bloom. The series is easy to plan and flowers profusely with high quality flower stems. Plant the young plants in the greenhouse or tunnel from late summer to early autumn for flowering from late winter to late spring.



Tagetes erecta F1

Nosento Limegreen

Tagetes Nosento Limegreen is a beautiful variety with large, fresh green/yellow flowers, a very high uniformity and a robust crop.

Nosento's dark green leaves form a nice contrast. The flowers are round and of top quality, with a vase life of around 3 weeks. The name gives

it away: this remarkable 'No Sento' Tagetes does not give off the normally strong Tagetes scent... Nosento can be sown in the greenhouse from mid-winter until spring, and outside from mid to late spring. This gives a long, stable flowering period from mid-spring to autumn.



Tanacetum parthenium

Evanthia offers a very broad range of Tanacetum (a.k.a. Matricaria), covering various colours and flower types.

Our active breeding programme for this product group focusses strongly on uniformity. This has resulted in several very successful varieties and exciting newcomers with outstanding characteristics.



NEW

Tanacetum Cameron

- Highly uniform from start to finish
- For steady yearround production
- Well-branching in the more upper part of the stems enables easy harvest and processing
- Contrasting dark green top quality leaves
- Well-filled ring of flower petals
- Impresively high flower count



Tanacetum Campagne

- Single-flowers, bright white petals with a golden yellow centre
- Good branching and rich flowering
- Contrasting dark leaves of excellent quality



NEW

Tanacetum Camilla

- Warm coloured, single-flowered Tanacetum
- Golden yellow heart with a ring of creamy-soft yellow petals
- Well-branching and rich flowering
- Contrasting dark green foliage of excellent quality
- Ideal for yearround production



Tanacetum
Amazone

- Bright yellow Tanacetum, with well-filled semi-circular flowers
- Good branching and rich flowering



Tanacetum
Baya®

- Popular scentless variety
- Well-filled semi-circular radiant white flowers
- Uniform stems easily reach 60 to 80 cm of height
- Nice branching habit
- All year round stems of the highest quality and a long vase life



Tanacetum
Rio

- Radiant white, well filled semi-circular flowers
- Relatively tall stems
- Great branching and volume
- Year-round greenhouse cultivation



Tanacetum
Lima

- Robust, finely-built stems with many semi-spherical white flowers
- Short cultivation period
- Throughout the year constant high quality



Tanacetum
Orinoco

- Creamy white, semi-double Tanacetum
- Short cultivation period and consistent high quality
- Robust, slender stems that are well-branching and carry masses of flowers



Trachelium caeruleum



Corine series

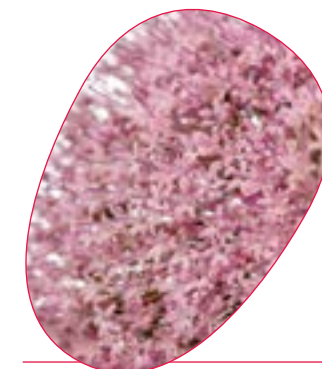
Trachelium Corine has large decorative umbels with masses of star-shaped flowers in a bright colour spectrum. The series excels in uniformity and has good branching and fast bud formation.

Corine can be produced almost year round.

Whereas other varieties sometimes have difficulty forming buds in darker, cooler periods, this is precisely what Corine scores well on. Plant the young plants of Corine in autumn and early winter for a quick production and rich flowering from mid-winter to early spring.



Corine
Light Blue



Corine
Lilac



Corine
Misty Blue



Corine
Purple



Corine
Red



Corine
White

Supreme Early & Supreme series

Supremes presents pretty colours and uniform stems with a large central cluster surrounded by smaller umbels on side branches.

In milder climates they can be produced almost yearround. Where others can have difficulty producing sufficient length in the summer period,

this is precisely what Supreme excels at. Plant Supreme Early from mid-winter to early spring and from late summer to autumn, for stable seasonal

transitions. Plant Supreme from late spring into summer, for excellent quality from summer to autumn.



Supreme Early
Light Blue



Supreme
Blue



Supreme
Purple



Supreme
White

Seasonal flowers

At Evanthia you'll find the best varieties from our own breeding along with a wide selection of top series and varieties from breeders all over the world. Plenty of options for you to be versatile, progressive and ready to take on challenges, while working with a trusted partner.

Take a look at our broad line of seasonal flowers. An interesting product group and high in-demand, as it fits so well in ongoing trends of lush, wild field bouquets with fascinating textures, forgotten flowers, natural colours and a cottage garden vibe. This product line translates perfectly to the Slow Flower movement, promoting

seasonal, regional products grown in the originally right periods (defined by nature itself), produced in an eco-friendly way as much as possible, for the benefit of local sales.

Due to our years of experience and our strong network of seed sources, with us you can count on a solid supply of seasonal flower seeds. At Evanthia you can rely on the seed you sow being healthy and of the highest quality. Contact our team to help you compose the optimal programme for an extra-long and productive harvest season.

Please note: Evanthia's range of Seasonal Flowers is much wider than presented here and keeps on growing.

Take a look at the assortment list at page 49 of this catalogue and check our website evanthia.nl/en for frequent assortment updates.



Amaranthus

Extraordinary, curious flower shapes, earthy colour tones, pendulous flowers or upright plumes, fresh or dried... Amaranthus can be used in so many creative ways! Excellent for bouquets or woven into floral arrangements. Flowering during summer months, well into autumn.



Amaranthus caudatus Red & Viridis

Callistephus chinensis

Callistephus brings you robust semi-double flowers in vibrant colours with a beautiful contrasting yellow centre.

The strong upright stems have good branching at the top, which makes it easy to harvest well-filled clusters. Callistephus Matsumoto series is an early flowering strain and the Jowi Mix can be produced from early spring and throughout autumn, allowing for a very long supply period.



Callistephus chinensis Jowi mix



Callistephus chinensis Matsumoto mix

Carthamus tinctorius

Evanthia has selected 3 varieties that stand out for their sturdy, well-branching stems (80-100 cm), uniform plant structure and flowering time.

Ice Cream, Kinko and Zanzibar have large buds, supported by robust stems, which prove their strength during transport, processing and in the vase. These versatile varieties are suitable for

fresh and dried bouquets, and can also be harvested green at an earlier stage. Ice Cream and Kinko will flower slightly earlier than Zanzibar.



Carthamus tinctorius Ice cream



Carthamus tinctorius Kinko



Carthamus tinctorius Zanzibar

Delphinium

Delphinium consolida EVA series

- EVA high quality selection
- Highly uniform, excellent for cut flower production
- Firm stems with an average length of 90 cm
- Double flowers in 5 vibrant colours



Delphinium cultorum belladonna Blue Shadow

- Single-flowered, with distinctive pointed spurs
- Uniform, heat tolerant variety
- High yielding, quick-to-finish
- Exclusively available through Evanthia



Helichrysum bracteatum

Helichrysum bracteatum, also known as Strawflower, is a great option for fresh or dried arrangements. It has long-lasting, unusual papery flowers and is available in range of colours varying from Scarlet to Lemon Yellow and Coppery Red to Silvery Rose, individually available.



Cut foliage



From an average filler to the foundation of floral arrangements, from the background to the backbone of any bouquet, rustic and robust, the leading lady in all-green bunch, nature in its most original form and colour...

Cut foliage is finally being properly valued and is reflected in the most

popular and long-lasting floral trends. Scandinavian greenery trends, loose and organic, neutral and natural vibes, exotic and tropical – foliage greens are incorporated in virtually all major current it-styles. It's time to take a closer look at what's out there and highlight our favourite florist's greens!

Bupleurum rotundifolium Griffiti



- Fresh green/yellow colour blend
- Adds great volume, thanks to its well-branching, airy stems
- Leaves resemble Eucalyptus leaves, with their typical shape and positioning
- Easy to grow and can be offered as fresh or dried flowers



Panicum virgatum Fontaine



- Elegant ornamental grass, with playful airy panicles that fan out like a fountain
- Excellent basal branching, many branches per plant to harvest
- Sturdy long stems with fresh green leaves and excellent vase life



Setaria



- Lovely lush ornamental 'foxtail' grass with broad decorative leaves
- Waving cuddly plumes for a playful effect
- Setaria italica and Setaria macrocheata from a great match
- Ideal for summer and autumn bouquets with their fresh green to warm bronze colours



Setaria italica Lowlander

Setaria macrocheata Green Bristles



And this is just the tip of the iceberg! At Evanthia you will find a broad line of cut foliage to boost your product range. We offer everything you need to get off to a good start with cut foliage and to help you grow a crop that's perfect for your unique business.

Check the assortment list of this Cut Flower Catalogue at page 49 for a complete overview of our fabulous foliage. Aside from these soft and cuddly greens, you will find even more florist's foliage in our Tropical Plants Catalogue. Discover our tough, tropical and often woodier greens, such as Asparagus, Eucalyptus, Monstera, Strelitzia, Ruscus, and many more stunning items.



Contact

EVANTHIA

Vlotlaan 560
2681 TX Monster
The Netherlands
+31 174 715 100
sales@evanthia.nl

ALWAYS INFORMED

Keep an eye on our website and social media
evanthia.nl

Follow us – in f X YouTube Instagram Pinterest WhatsApp

Short lines and personal contact, that is what the service of Evanthia is all about. Whether it concerns guidance for selecting your product range, commercial issues, special requests or

intensive cultivation advice, we're here for you. With us you know who you are dealing with. We are happy to connect you with our team.

How can we help you?



Sales Support



Cindy Rodenrijs
Sales Support

+31 174 715 137 / +31 651 112 063
c.rodenrijs@evanthia.nl



Joey de Nennie
Sales Support

+31 174 715 102 / +31 651 112 063
j.denennie@evanthia.nl

Sales



UFO Supplies – John de Wit
Sales Agent Africa (ex RSA)

+31 651 224 590 / +31 174 715 100
john@ufosupplies.nl

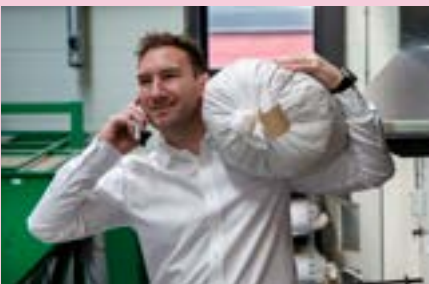
Product Management & Technical Advice



Leo Boers
Product Specialist / Crop Advisor

+31 174 715 124 / +31 612 460 597
l.boers@evanthia.nl

Sales



Marvin Grootendorst
Sales Manager USA, Canada, UK, Oceania

+31 174 715 101 / +31 623 919 941
m.grootendorst@evanthia.nl



Sonia Janssen
Sales Manager South & Central America

+31 174 715 134 / +31 623 012 649
s.janssen@evanthia.nl



Gert-Jan Jungerius
Sales Manager Netherlands

+31 628 906 899 / +31 174 715 100
gj.jungerius@evanthia.nl

Marketing



Marijke Meijer
Online Marketing Specialist

+31 645 211 504 / +31 174 715 100
m.meijer@evanthia.nl



Marcella Hempelmann
Marketing / Communication

+31 621 626 828 / +31 174 715 100
m.hempelmann@evanthia.nl



Peter van Noort
Product Manager

+31 174 715 125 / +31 643 359 090
p.vnoort@evanthia.nl



Scott van der Spek
Junior Sales Manager Brazil

+55 19 997 9216 17 / +31 174 715 100
s.vdspek@evanthia.nl



Michel de Kok
Sales Agent Japan & South Korea

+31 652 022 518 / +31 174 715 100
m.dekok@evanthia.nl



Interseeds – Marleen Heus
Sales Agent Republic South Africa

+27 82 822 5674 / +31 174 715 100
marleen@interseeds.co.za



Louis Kester
Commercial Director

+31 174 715 118 / +31 612 972 801
l.kester@evanthia.nl



Dion Kaman
Chief Financial Officer

+31 174 715 142 / +31 657 545 186
d.kaman@evanthia.nl



Nico Grootendorst
Director / Owner

+31 174 715 113 / +31 643 359 100
n.grootendorst@evanthia.nl

Board of Directors

Assortment list

A

Antirrhinum majus F1 Antibes Magenta I	p9
Antirrhinum majus F1 Antibes Orange I	p9
Antirrhinum majus F1 Antibes Deep Orange I	p9
Antirrhinum majus F1 Antibes Pink I	p9
Antirrhinum majus F1 Antibes Red I	p9
Antirrhinum majus F1 Antibes Rose I	p9
Antirrhinum majus F1 Antibes Early White I	p9
Antirrhinum majus F1 Antibes White I	p9
Antirrhinum majus F1 Antibes Yellow I	p9
Antirrhinum majus F1 Avignon Apricot II	p10
Antirrhinum majus F1 Avignon Bicolor Yellow II	p10
Antirrhinum majus F1 Avignon Dark Red II	p10
Antirrhinum majus F1 Avignon Deep Orange II	p10
Antirrhinum majus F1 Avignon Ivory II	p10
Antirrhinum majus F1 Avignon Magenta II	p10
Antirrhinum majus F1 Avignon Pink II	p10
Antirrhinum majus F1 Avignon Rose II	p10
Antirrhinum majus F1 Avignon Cherry Rose II	p10
Antirrhinum majus F1 Avignon Deep Rose II	p10
Antirrhinum majus F1 Avignon Light Rose II	p10
Antirrhinum majus F1 Avignon White Imp. II	p10
Antirrhinum majus F1 Avignon Silver II	p10
Antirrhinum majus F1 Cannes Dark Orange II-III	p11
Antirrhinum majus F1 Cannes Early White II-III	p11
Antirrhinum majus F1 Cannes Lavender II-III	p11
Antirrhinum majus F1 Cannes Lemon II-III	p11
Antirrhinum majus F1 Cannes Light Bronze II-III	p11
Antirrhinum majus F1 Cannes Orange II-III	p11
Antirrhinum majus F1 Cannes Pink II-III	p11
Antirrhinum majus F1 Cannes Purple II-III	p11
Antirrhinum majus F1 Cannes Red II-III	p11
Antirrhinum majus F1 Cannes Red Delight II-III	p11
Antirrhinum majus F1 Cannes Rose II-III	p11

Antirrhinum majus F1 Cannes Velvet Red II-III	p11
Antirrhinum majus F1 Cannes White II-III	p11
Antirrhinum majus F1 Cannes Yellow II-III	p11
Antirrhinum majus F1 Orleans Lilac III-IV	p12
Antirrhinum majus F1 Orleans Light Orange III-IV	p12
Antirrhinum majus F1 Orleans Red III-IV	p12
Antirrhinum majus F1 Orleans Rose III-IV	p12
Antirrhinum majus F1 Orleans White Imp. III-IV	p12
Antirrhinum majus F1 Orleans Yellow III-IV	p12
Antirrhinum majus F1 Orleans Early Yellow III-IV	p12
Antirrhinum majus F1 Orleans Early Lemon III-IV	p12
Antirrhinum majus F1 Orleans Pure White III-IV	p12
Antirrhinum majus F1 Toulon Lavender IV	p13
Antirrhinum majus F1 Toulon Purple IV	p13
Antirrhinum majus F1 Toulon Rose IV	p13
Antirrhinum majus F1 Toulon Velvet IV	p13
Antirrhinum majus F1 Toulon White IV	p13
Brassica oleracea F1 Empire Agathana	p14
Brassica oleracea F1 Empire Akilina	p14
Brassica oleracea F1 Empire Alexandra	
Brassica oleracea F1 Empire Anna	p14
Brassica oleracea F1 Empire Antonina	
Brassica oleracea F1 Empire Arina	
Brassica oleracea F1 Empire Bogdana	p14
Brassica oleracea F1 Empire Boika	
Brassica oleracea F1 Empire Dunya	
Brassica oleracea F1 Empire Fedora	
Brassica oleracea F1 Empire Gruska	
Brassica oleracea F1 Empire Katinka	
Brassica oleracea F1 Empire Katya	
Brassica oleracea F1 Empire Ksenia	p15
Brassica oleracea F1 Empire Kysia	
Brassica oleracea F1 Empire Luba	p15

B

C

Brassica oleracea F1 Empire Olga	p15
Brassica oleracea F1 Empire Selena	p15
Brassica oleracea F1 Empire Sofia	p15
Brassica oleracea F1 Empire Tekla	p15
Brassica oleracea F1 Empire Zaneta Imp.	
Brassica oleracea F1 Black Leaf	
Brassica oleracea F1 Black Angel	p15
Brassica oleracea F1 Elegance	p15
Brassica oleracea F1 First Lady	p15
Brassica oleracea F1 White Lady	
Campanula medium Big Ben Deep Blue	p20
Campanula medium Big Ben Lavender	p20
Campanula medium Big Ben Pink	p20
Campanula medium Big Ben White	p20
Celosia argentea cristata Act Dara (Velvet)	p16
Celosia argentea cristata Act Diva (Red)	p16
Celosia argentea cristata Act Inca (Yellow)	p16
Celosia argentea cristata Act Rima (Rose)	p16

Celosia argentea cristata Act Verda (Green)	p16
Celosia argentea cristata Act Vida (Lemon)	p16
Celosia argentea cristata Act Zara (Orange)	p16
Celosia argentea cristata Act Ziva (Pink)	p16
Celosia argentea cristata Reprise Gold	p17
Celosia argentea cristata Reprise Orange	p17
Celosia argentea cristata Reprise Rose	p17
Celosia argentea cristata Reprise Velvet	p17
Celosia argentea cristata Reprise Yellow	p17
Celosia argentea cristata Captain Carmine	p17
Celosia argentea cristata Captain Dark Orange	p17
Celosia argentea cristata Captain Light Orange (Red Tips)	p17
Celosia argentea cristata Captain Red (Dark Leaved)	p17
Celosia argentea cristata Captain Rose	p17
Celosia argentea cristata Captain Scarlet	p17
Celosia argentea cristata Captain Yellow	p17



Laying the foundation for your crop together.

Assortment

Celosia argentea cristata Martine Pink	p17
Celosia argentea cristata Martine Purple	p17
Celosia argentea cristata Martine Salmon	p17
Celosia argentea cristata Martine Scarlet	p17
Celosia argentea cristata Martine Yellow	p17
Celosia argentea cristata Purple Jack	p17
Celosia argentea cristata Red Jack	p17
Celosia argentea cristata Scarlet Jack	p17
Celosia argentea cristata Haute Couture	p18
Celosia argentea cristata Indian Summer	
Celosia argentea cristata Lavly	p18
Celosia argentea cristata Moonshine Reggae	p18
Celosia argentea cristata Mystic	p18
Celosia argentea cristata Pink Delight	p18
Celosia argentea cristata Rose Delight	p18
Celosia argentea cristata Smashing	p18
Celosia argentea cristata Smashing Yellow	p18
Celosia argentea cristata Solid	p18

Celosia argentea cristata Bar Bora (Purple)	p19
Celosia argentea cristata Bar Bossa (Champagne)	p19
Celosia argentea cristata Clubs Cocktail	
Celosia argentea cristata Clubs Fire	p19
Celosia argentea cristata Coral Diamond	p19
Celosia argentea cristata Cristi Purple	p19
Celosia argentea cristata Frozen	p18
Celosia argentea cristata Purple Diamond	p19
Celosia argentea cristata Red Ace	p19
Celosia argentea cristata Red Diamond	
Celosia argentea cristata Red King	
Celosia argentea cristata Sunshine Reggae	p19
Celosia argentea cristata Unlimited Coral	p19
Celosia argentea cristata Unlimited Pink	p19
Celosia argentea cristata Muse Orange	p19
Celosia argentea cristata Muse Coral	p19
Celosia argentea cristata Muse Pink	p19
Celosia argentea cristata Turbo Hot Pink	p19



D

Celosia argentea cristata Turbo Lilac Rose	p19
Celosia argentea cristata Turbo Rose	
Celosia argentea cristata Turbo Scarlet	p19
Dianthus barbatus Barcelona Pink	p20
Dianthus barbatus Barcelona Red	p20
Dianthus barbatus Barcelona Purple	p20
Dianthus barbatus Barcelona White	p20
Dianthus barbatus Barbienne Appleblossom	p21
Dianthus barbatus Barbienne Burgundy	p21
Dianthus barbatus Barbienne Deep Red	p21
Dianthus barbatus Barbienne Pink	p21
Dianthus barbatus Barbienne Red White	p21
Dianthus barbatus Barbienne Rose	p21
Dianthus barbatus Barbienne Salmon	p21
Dianthus barbatus Barbienne Scarlet	p21
Dianthus barbatus Barbienne Violet	p21
Dianthus barbatus Barbienne White	p21

E

Eustoma russellianum FI LisAdora® Apricot III	p23
Eustoma russellianum FI LisAdora® Deep Blue III	p23
Eustoma russellianum FI LisAdora® Light Pink III	p23
Eustoma russellianum FI LisAdora® Pink Picotee II-III	p23
Eustoma russellianum FI LisAdora® Pure White III	p23
Eustoma russellianum FI LisAdora® White II	p23
Eustoma russellianum FI Cessna Blue III	p24
Eustoma russellianum FI Cessna Blue Picotee III	p24
Eustoma russellianum FI Cessna Deep Rose III	p24
Eustoma russellianum FI Cessna Green III	p24
Eustoma russellianum FI Cessna Pure White III	p24
Eustoma russellianum FI Cessna Red III	p24
Eustoma russellianum FI Cessna Rose III	p24
Eustoma russellianum FI Cessna Rose Picotee III	p24
Eustoma russellianum FI Cessna Vogue IV	p24
Eustoma russellianum FI Cessna White Imp. III	p24

Eustoma russellianum FI Cessna Yellow III	p24
Eustoma russellianum FI Evanthe Purple II-III	p25
Eustoma russellianum FI Evanthe White Wink III	p25
Eustoma russellianum FI Evanthe Yellow II	p25
Eustoma russellianum FI Minilisi® Blue Double II	p26
Eustoma russellianum FI Minilisi® Blue Single II	p26
Eustoma russellianum FI Minilisi® Pink Single II	p26
Eustoma russellianum FI Minilisi® Rose Double II	p26
Eustoma russellianum FI Minilisi® Rose Single II	p26
Eustoma russellianum FI Minilisi® White Double II	p26
Eustoma russellianum FI Minilisi® White Single II	p26
Eustoma russellianum FI Adom Deep Red III	p27
Eustoma russellianum FI Adom Red Picotee III	p27
Eustoma russellianum FI Peach Relevation F1 III	p27
Freesia hybrida Royal Crown Blue	p27
Freesia hybrida Royal Crown Red	p27
Freesia hybrida Royal Crown Rose	p27
Freesia hybrida Royal Crown White	p27
Freesia hybrida Royal Crown Yellow	p27
Helianthus annuus FI Solano® Deep Orange	p28
Helianthus annuus FI Solano® Gold	p28
Helianthus annuus FI Solano® Orange nr. 12	p29
Helianthus annuus FI Solano® Orange nr. 14	p29
Helianthus annuus FI Solano® Double	p29
Helianthus annuus FI Solano® Flame	p29
Helianthus annuus FI Solcito	p29
Helianthus annuus Solbrite	p29
Helianthus annuus Tanja	
Matthiola incana StoX® Antique Rose	p31
Matthiola incana StoX® Champagne	p31
Matthiola incana StoX® Deep Rose	p31
Matthiola incana StoX® Rose Pink	p31
Matthiola incana StoX® Silver	p31

F

H

M

Assortment

Matthiola incana StoX® White	p31
Matthiola incana StoX® Yellow	p31
Matthiola incana Milla Aubergine	p32
Matthiola incana Milla Blue	p32
Matthiola incana Milla Deep Rose	p32
Matthiola incana Milla Lavender	p32
Matthiola incana Milla Light Pink	p32
Matthiola incana Milla Purple	p32
Matthiola incana Milla Rose	p32
Matthiola incana Milla Salmon	p32
Matthiola incana Milla White	p32
Matthiola incana Coselja Antique Rose	p33
Matthiola incana Coselja Apricot	
Matthiola incana Coselja Deep Rose	
Matthiola incana Coselja Rose	
Matthiola incana Coselja White	
Matthiola incana Coselja Yellow	
Matthiola incana Centum Carmine	p33
Matthiola incana Centum Cream	p33
Matthiola incana Centum Deep Blue	p33
Matthiola incana Centum Lavender	p33
Matthiola incana Centum Pink	p33
Matthiola incana Centum Red	p33
Matthiola incana Centum Rose	p33
Matthiola incana Centum Soft Pink	p33
Matthiola incana Centum White	p33
Matthiola incana Jordyn Apricot	p33
Matthiola incana Jordyn Cherryblossom	p33
Matthiola incana Jordyn Cream	p33
Matthiola incana Jordyn Deep Blue	p33
Matthiola incana Jordyn Deep Rose	p33
Matthiola incana Jordyn Lavender	p33
Matthiola incana Jordyn Light Rose	p33

Matthiola incana Jordyn Red	p33
Matthiola incana Jordyn White	p33
Myosotis alpestris Blue Memory	p34
Tagetes erecta FI Nosento Limegreen	p34
Tanacetum parthenium Cameron	p35
Tanacetum parthenium Campagne	p35
Tanacetum parthenium Camilla	p35
Tanacetum parthenium Amazone	p36
Tanacetum parthenium Baya®	p36
Tanacetum parthenium Rio	p36
Tanacetum parthenium Lima	p36
Tanacetum parthenium Orinoco	p36
Tanacetum parthenium Victory Double Yellow	
Tanacetum parthenium Victory Queen White	
Tanacetum parthenium Victory Single White	
Tanacetum parthenium Victory Summer Yellow	
Tanacetum parthenium White Crown	
Trachelium caeruleum Corine Light Blue	p37
Trachelium caeruleum Corine Lilac	p37
Trachelium caeruleum Corine Misty Blue	p37
Trachelium caeruleum Corine Purple	p37
Trachelium caeruleum Corine Red	p37
Trachelium caeruleum Corine White	p37
Trachelium caeruleum Supreme Early Blue	
Trachelium caeruleum Supreme Early Light Blue	p37
Trachelium caeruleum Supreme Early Purple	
Trachelium caeruleum Supreme Early White	
Trachelium caeruleum Supreme Blue	p37
Trachelium caeruleum Supreme Lila	
Trachelium caeruleum Supreme Purple	p37
Trachelium caeruleum Supreme White	p37

T



Seasonal flowers	
Amaranthus caudatus Red	p38
Amaranthus caudatus Viridis	p38
Amaranthus hypochondriacus Green Thumb	
Amaranthus hypochondriacus Pygmy Torch	
Amaranthus paniculatus Hot Biscuits	
Ammi visnaga Casablanca	
Ammi visnaga Green Mist	
Anethum graveolens Vierling	
Callistephus chinensis Matsumoto Blue	p38
Callistephus chinensis Matsumoto Blue tipped White	p38
Callistephus chinensis Matsumoto Light Blue	p38
Callistephus chinensis Matsumoto Pink	p38
Callistephus chinensis Matsumoto Pink tipped White	p38
Callistephus chinensis Matsumoto Salmon	p38
Callistephus chinensis Matsumoto Scarlet	p38
Callistephus chinensis Matsumoto White tipped Blue	p38
Callistephus chinensis Jowi Mix	p38
Carthamus tinctorius Ice cream	p39
Carthamus tinctorius Kinko	p39
Carthamus tinctorius Zanzibar	p39
Craspedia globosa Drumstick	
Daucus carota Dara	
Delphinium consolida EVA Carmine Rose	p39

Delphinium consolida EVA Deep Blue	p39
Delphinium consolida EVA Lilac Lavender	p39
Delphinium consolida EVA Salmon Pink	p39
Delphinium consolida EVA White	p39
Delphinium cultorum belladonna Blue Shadow®	p39
Helichrysum bracteatum Bright Rose	p39
Helichrysum bracteatum Copper Red	p39
Helichrysum bracteatum Golden Yellow	p39
Helichrysum bracteatum Orange	p39
Helichrysum bracteatum Rose	p39
Helichrysum bracteatum Salmon Rose	p39
Helichrysum bracteatum Scarlet	p39
Helichrysum bracteatum Silvery-Rose	p39
Helichrysum bracteatum White	p39
Nigella damascena Albion Black pod	
Nigella damascena Albion Green pod	

Cut foliage	
Bupleurum rotundifolium Griffiti	p40
Lepidium sativum Attraxa	
Panicum virgatum Fontaine	p40
Setaria italica Lowlander	p41
Setaria macrocheata Green Bristles	p41

This is one
of three
catalogues.

In addition to this catalogue, we also have catalogues for
Tropical plants and Pot & Bedding plants.



Various products of Evanthia are subjected to Plant Variety Protection
conditions and regulations.
Please contact our team or check evanthia.nl for more information.

General Sales & Delivery Terms:
All offers, agreements and supplies of Evanthia shall be made and concluded under our
General Sales and Delivery Terms, for which we refer you to our website: evanthia.nl/en



evanthia

A breeder with
vision and the
desire to grow
together.



EVANTHIA

Vlotlaan 560
2681 TX Monster
The Netherlands

T +31 174 715 100

Oranjesluisweg 32
2691 MS 's-Gravenzande
The Netherlands

T +31 174 715 121

E-mail
sales@evanthia.nl

Website
evanthia.nl



Follow us — [in](#) [f](#) [X](#) [v](#) [i](#) [p](#) [w](#)